

**GWINNETT COUNTY  
PUBLIC LIBRARY SYSTEM**

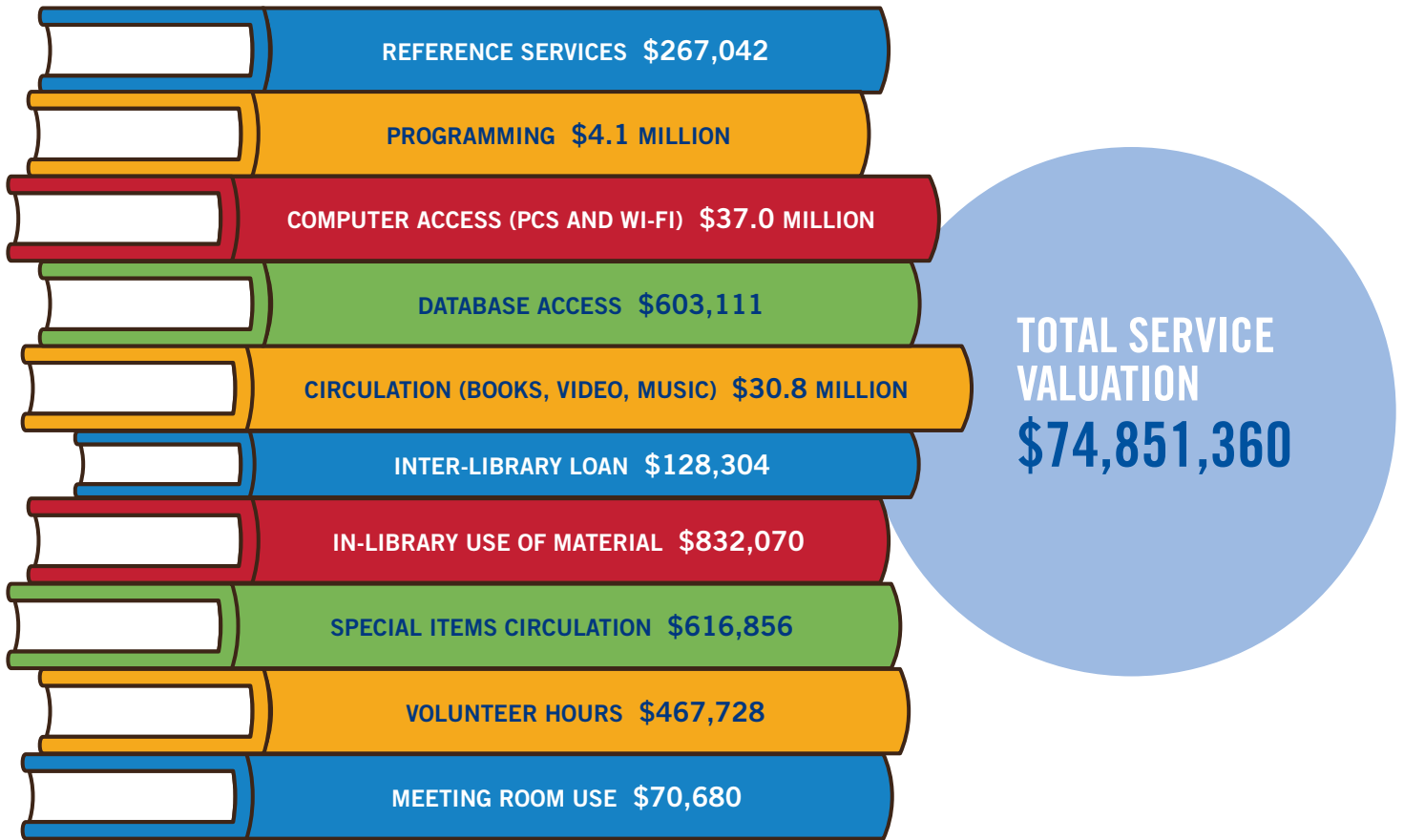
**ESTIMATED SERVICE  
VALUATION AND  
ECONOMIC IMPACT 2018**



**GWINNETT COUNTY  
PUBLIC LIBRARY**

# GWINNETT COUNTY PUBLIC LIBRARY SYSTEM

## SERVICE VALUATION AND ECONOMIC IMPACTS, 2018



### ECONOMIC IMPACTS **INDIRECT AND INDUCED**

**Indirect** \$3.5 million

**Induced** \$8.1 million

**Total Economic Impacts**  
**\$11.6 million**

**Indirect impacts** are jobs, labor income, and economic output (the value of goods and services) produced at firms providing goods and services to Georgia's libraries including office supplies, building maintenance, and library resources.

**Induced economic impacts** are jobs, labor income, and economic output resulting from household spending by employees of the libraries and by persons in the indirect jobs supported by library operations.

### TOTAL SOCIAL BENEFITS



Services  
**\$74.9 million**



Economic Impacts  
**\$11.6 million**



Total  
**\$86,440,795**



# HOW THE GWINNETT COUNTY LIBRARY SYSTEM IS FUNDED 2018



**\$18  
million**

Local Government and  
Other Local Revenue



**\$1.6  
million**

State Grants and  
Other State Support



**\$165,217**

Federal



**\$499,941**

Capital Projects, Facilities,  
and Technology\*

\*Estimated average annual share of GPLS spending.

**TOTAL \$20,269,612**



Each  
**\$1.00**  
of inputs produces  
**\$4.26**  
in services and  
economic impacts

# VISIT YOUR GWINNETT COUNTY LIBRARY

## Buford – Sugar Hill

2100 Buford Highway  
Buford, GA 30518-6035

## Centerville

3025 Bethany Church Road  
Snellville, GA 30039-6109

## Collins Hill

455 Camp Perrin Road  
Lawrenceville, GA 30043-2408

## Dacula

265 Dacula Road  
Dacula, GA 300019-2131

## Duluth

3480 Duluth Park Lane  
Duluth, GA 30096-3257

## Five Forks

2780 Five Forks Trickum Road  
Lawrenceville, GA 30044-5865

## Grayson

700 Grayson Parkway  
Grayson, GA 30017-1208

## Hamilton Mill

3690 Braselton Highway  
Dacula, GA 30019

## Lawrenceville

1001 Lawrenceville Highway  
Lawrenceville, GA 30046-4707

## Lilburn

4817 Church Street  
Lilburn, GA 30047-6827

## Mountain Park

1210 Pounds Road SW  
Lilburn, GA 30047-6744

## Norcross

6025 Buford Hwy  
Norcross, GA 30071-2408

## Peachtree Corners

5570 Spalding Drive  
Peachtree Corners, GA 30092-2501

## Snellville

2740 Lenora Church Road  
Snellville, GA 30078-3226

## Suwanee

361 Main Street  
Suwanee, GA 30024-2233

**Gwinnett County Library System: (770) 978-5154**

To find your nearest public library, go to [www.georgialibraries.org/find-a-library](http://www.georgialibraries.org/find-a-library)



**Our Mission:** Empowering libraries to improve the lives of Georgians.

We achieve our mission by:

- Providing and encouraging visionary leadership
- Ensuring equal access to information and technology
- Promoting the value and joy of lifelong reading and learning
- Facilitating collaboration and innovation in the broader library community

This report was developed  
and designed by the



Carl Vinson  
Institute of Government  
UNIVERSITY OF GEORGIA

Since 1927, the Carl Vinson Institute of Government has been an integral part of the University of Georgia. A public service and outreach unit of the university, the Institute of Government is the largest and most comprehensive university-based organization serving governments in the United States through research services, customized assistance, training and development, and the application of technology.